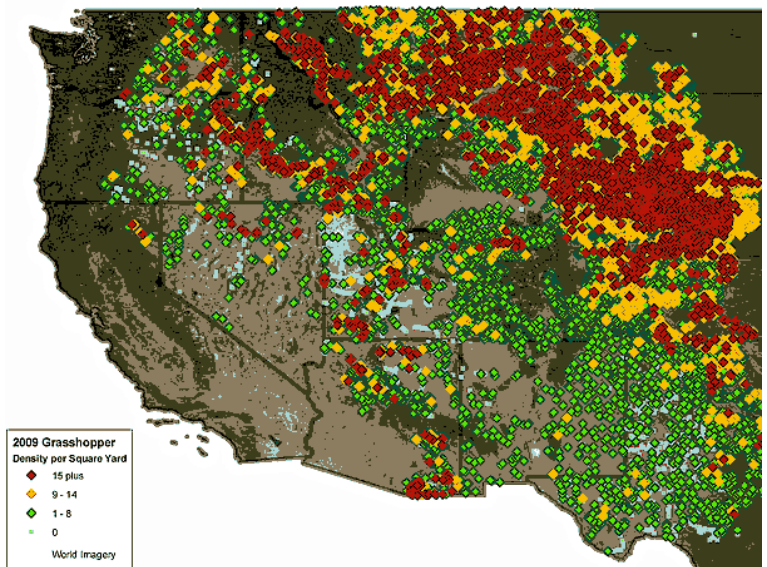


## Grasshopper Control – Row Crops, Pasture/Rangeland.

- USDA surveys across western U.S. states show the potential for heavy infestations of grasshoppers in 2010.
- Millions of acres across SD, NE, KS, CO, WY, MT had high number of grasshoppers in fall 2009.
- General Thresholds populations for treating grasshoppers:
  - **Light** 3-7/sq. yd.
  - **Moderate** 8-14/sq. yd. (Treatment likely needed),
  - **Heavy** 15+ / sq. yd. Treatment is needed.



### Grasshopper Control Options



**Corn (Field, Seed, Pop, Sweet), Soybeans, Potatoes, Head Lettuce, Succulent Peas & Beans,**

- Dual Action Pyrethroid with Fast Knockdown and Excellent residual.
- Excellent performance on all sizes of hoppers.
- No mite flare like other insecticides.
- Use Rates: **2.6 - 5.0 oz/A** (See specific crop sections on label for use rates by crop.)



**Corn, Soybeans, Sunflower, Sorghum, Wheat, Alfalfa, Pasture/Rangeland, Potatoes, Millet, Dry Beans, Peas, Brassicas, Veggies (Leafy, Fruiting, Cucurbits, Legume, Root & Tuber), others.**

- Broad crop label for use in most crops.
- Proven performance on grasshoppers for years.
- Controls Nymphs and Adults.
- 0-Day grazing restriction on pasture/range use.
- Use Rates: **3.5 – 4.0 oz**



- Proven Bifenthrin Performance
- Crop labels: Corn, Soybeans, Succulent Peas & Beans, Brassicas, Dry Beans.
- Use Rate: 4 – 6 oz/A